

Exhibit 2: Identifying Overspray/Blend Combinations for Acceptable Processing of "Very Sticky" Cotton

Concentration of Overspray	Blend of Non-sticky Cotton						
	0%	10%	25%	50%	75%	90%	95%
0.0%	3.0	3.0	3.0	3.0	3.0	3.0	1.0
0.5%	3.0	3.0	3.0	3.0	1.8	1.7	0.5
1.0%	2.5	1.8	1.3	1.1	0.6	0.3	0.3
1.5%	0.7	0.6	0.6	0.2	0.3	0.2	0.1
2.0%	0.7	0.4	0.3	0.3	0.3	0.1	0.1
2.5%	1.0	0.7	0.3	0.2	0.0	0.1	0.1
3.0%	0.5	0.3	0.2	0.0	0.2	0.0	0.0

NEW CLIENT-SERVER TECHNOLOGY AUTOMATES ITC

Billing, test results, and other paperwork that makes a business run is now automated at the ITC, thanks to Shridhar Chikkodi, research associate.

The staff of ITC typically conducts about 75 major projects each year and responds to more than 1000 requests for testing, evaluation, specialty processing, and manufacturing. With each department carrying out many projects simultaneously, it was critical to develop an information system for the center that could combine order processing and management reporting capabilities into a single system.

Over the past year, Shridhar has developed a customized client-server based information system to suit the needs of a textile research facility.

This Windows-based system has been built around a multi-dimensional relational database and uses Novell's Local Area Network to integrate networking on client workstations. The relational database acts as a container for all sorts of information and links the data electronically so that timely accessibility of the information is achieved with a few clicks of a mouse.

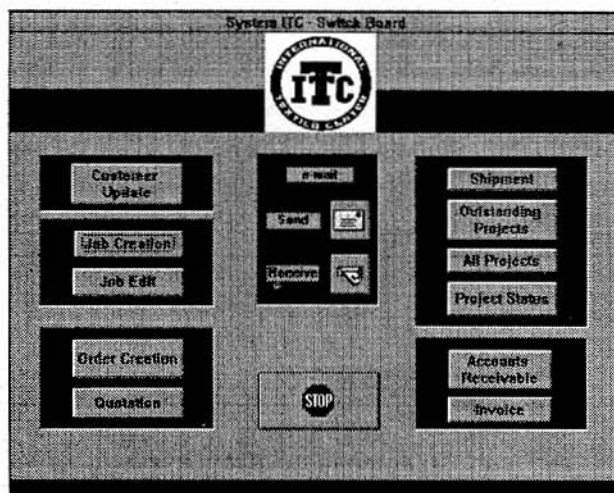
With the new system, it is easy to access up-to-the-minute information regarding status of an order, shipments, payments, and so on. The system is also used to generate invoices, quotations and several innovative reports. In the months to come, ITC intends to eliminate paper-based files and documentation.

The ITC has also developed a data reporting system exclusively for the Materials Evaluation Lab. This software has a built-in capability to import data directly

from High Volume Instruments and to enter data for other manual instruments. The data is then processed to produce standardized reports for clients.

Over the summer, new material will be added to our Web page, so visit us electronically:
<http://www.ttu.edu/~itc>

The main screen for the ITC information system.



MAILING LISTS UPDATED

The spring edition of Textile Topics included mailing list update sheets for our foreign and campus friends to let us know if they would like to continue receiving our quarterly newsletter. With this issue we will be including mailing list updates for our domestic friends. Please send or fax those update sheets back to us. We are required by the postal service to periodically update our mailing lists. Postage costs are considerable so we want to know if you want to receive Textile Topics. Thanks for helping us.